



PILOT MANUAL

version 1.0.3 | 16.02.2018



By Norbert Woeller - Andrew Williams - Peter Schindler
Christopher Bennett

Design by Jeroen Bos
Updated by Christopher Bennett

HOW IT WORKS

FLIGHT BRIEFING

PILOT'S LOUNGE

REPORTING FLIGHTS

PILOT CAREER
& RANKING

FLIGHT REPORTS

HANGAR

MISCELLANEOUS

BOOKING FLIGHTS

NAVIGATING THIS DOCUMENT

There are several ways of navigating this manual. You can use the standard way of clicking on the provided links in the left panel of Acrobat Reader.

Inside the manual you can click on the tabs to your right to go directly to the relevant chapter. To go back to the title page you can click on the Air-Child logo at the right top of every page.

Any URL's (links to websites or email addresses) inside the manual are clickable.

When there is a reference to another chapter this is clickable as well. **All clickable content inside the manual is underlined.**

CONTENTS

HOW IT WORKS - THE IDEA BEHIND AIR-CHILD

1.0 What is a VA?	2
1.1 The idea behind Air-Child	2
1.2 Air-Child philosophy	2
1.3 Register	2
1.4 Login	2

PILOT'S LOUNGE

2.0 My profile	3
2.1 Forum	4
2.2 My Reports	4
2.3 Pilot roster	4
2.4 Discord	5

PILOT CAREER AND RANKING

3.0 Pilot Careers	6
3.1 Basic Career	6
3.2 Advanced Career	6
3.3 Professional Career	6
3.4 Ranking	6

HANGAR

4.0 Air-Child Fleet	7
4.1 Fleet Overview	7
4.2 Fleet Map	7
4.3 Repaints	7

BOOKING FLIGHTS

5.0 Scheduled Flights	8
5.1 Charter Flights	9

FLIGHT BRIEFING

6.0 Scheduled Flight Briefing	10
6.1 Charter Flight Briefing	11
6.2 Company Flight Plan	13

REPORTING FLIGHTS

7.0 Report Flights	15
7.1 FS Flight Keeper	15
7.2 FsPassengers	18
7.3 XAcars	19

FLIGHT REPORTS

8.0 Pireps	20
8.1 My Reports	20
8.2 Live Watch	21

MISCELLANEOUS

9.0 Calendar	22
9.1 Flight Training	22
9.2 Documents	22
9.3 Statistics	22

HOW IT WORKS - THE IDEA BEHIND AIR-CHILD

1.0 What is a VA?

That's the first question you might ask if you are relatively new to flightsimming and if Air-Child is your first "Virtual Airline". Here's the answer: A VA is a group of Flight Simulator "pilots" who simulate either a fictitious or a real airline. The operation is purely non-profitable.

The objective is to enjoy professional flight simulation using your own personal computer at home, to simulate the virtual airline's flights and operations. Following a career, building points and being promoted to higher ranks gives the pilot an incentive to fly with a purpose.

It is important to highlight that this is a hobby, so the attraction is not a salary but a feeling of pilot community which particularly attracts people to the VA, depending on their geographic, technical and cultural tastes.

1.1 The idea behind Air-Child

The difference between Air-Child and other VA's is the charity aspect. Attached to the VA there is a network of sponsoring partners paying various amounts of money for every flight an Air-Child pilot has flown. This money will be sent directly to UNICEF. More information about this charity program is available on our website.

We will also be holding special Online-Events at our HUBs, which Air-Child or other sponsors will support, and contribute money for every flight that is flown in a given time to or from this Airport. Non Air-Child pilots have the chance to support UNICEF with a flight to that airport.

Our main HUB is located at Cologne (EDDK), the home of Germany's UNICEF section. Further we have smaller HUBs at Stockholm (ESSA), Athens (LGAV), Amsterdam (EHAM), Vienna (LOWW) and Manchester (EGCC). We will be adding more HUBs in the future. By the time you read this manual, more HUBs

may have already been added. Our Cargo-HUB is located at Copenhagen (EKCH), home of the central product stock of UNICEF.

We provide a large selection of short, medium and long range flights. Please search for flights in the 'dispatch centre'.

From time to time special flights will be announced. These flights will be taken from real UNICEF operations. If UNICEF supports people in a disaster area, we will offer flights to that region.

The majority of our aircraft are named after UNICEF ambassadors, authors of children's books and characters taken from such books, comics and stories. The others are named after our Beta Testers.

At Air-Child we offer the possibility to follow different pilot careers. These are the Basic Career, the Advanced Career and the Professional Career. For more information please refer to [CHAPTER 3 PILOT CAREER AND RANKING](#).

1.2 Air-Child philosophy

Flightsimming is a hobby, that's why it is most important that you, the pilots, have fun. This is the reason we offer different approaches to flight simming. From the "serious" online flyer to the occasional desktop pilot to the absolute beginner. At Air-Child everyone should find a home to feel comfortable at.

The same way we are trying to help children, we also want to help each other within Air-Child. Don't hesitate to ask your questions on the forum. Also we want to encourage you to have a look on the forum, maybe you can

answer questions other Air-Child pilots have asked.

A virtual airline is nothing without its pilots – that means You. You alone will bring Air-Child to life. Let us know your wishes. Do you miss your preferred destination in our time table? Let us know! You have a great idea for something to be added or changed? Let us know! We will try our best to make your wishes come true.

Air-Child is YOUR virtual airline.

1.3 Register

First you have to join as a pilot. Go to 'join', fill in the application form and register. You will get your Pilot ID and password via E-Mail.

1.4 Login

After you have received your Login Details, go back to the Air-Child site and login with your Pilot ID and Password (top left) (Fig. 1.1). If you click on the 'remember me' checkbox, you stay automatically logged in every time you visit the Air-Child site. **To use this function you need cookies enabled in your browser.**

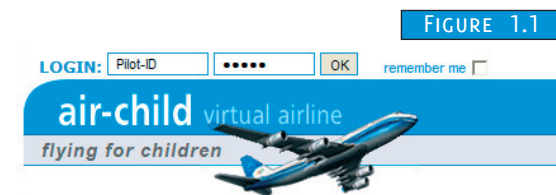


FIGURE 1.1

After you have logged in, you have access to all features.

PILOT'S LOUNGE

2.0 My profile

On the left side of the Air-Child site you will find the menu. Click on 'pilot's lounge' and then on 'my profile' (Fig. 2.1). Please change your password and confirm it. Note: it has to be between 6 and 12 characters long. Click on 'save changes'.

You can also change your E-Mail Address and your career mode. For more information please refer to [CHAPTER 3 PILOT CAREER AND RANKING](#). You have a choice of selecting Kilograms (KG) or Pounds (LBS) as the default weight unit. This will have an effect on the output of your company flightplan.

If you don't want the flight critique shown with your reported piprep, please uncheck the checkbox 'Show Flight Critique'.

If you have a VATSIM or IVAO ID, please enter your data. This is necessary to send the flightplan to your Online Network, although IVAO currently does not provide an interface for pre-filing. You must save your changes to take effect.

On the right side you will find the 'Personal Files' tab (Fig. 2.1).

Click on it. Here you will find all the configuration files for our piprep systems ready to use. (Fig. 2.2) You will also find the URL for your Air-Child banner. Please note: Different forums have different rules to show a banner. In most cases the URL you can copy here will work. For our forum, you have to use the [img] tag at the beginning and the end of the URL like this:

```
[img]http://www.air-child.com/mysig/ACH0002.jpg[/img]
```

Copy the URL in the signature box of your forum profile.

MY PROFILE

ACH0002 ■ Norbert Woeller 🇩🇪
Senior Officer

Flights: 52
Hours: 85 hrs 33 mins
Miles: 24686 nm
Points: 355

FS version: FS2004
VA-Hub: EDDK
Position: EDDH
last flight: ACH7639
last report: 2008-12-15 23:08:08

state:
home base:
date of birth: 1958-03-31
joined: 2007-05-04
contact:
password:
repeat:

career:
weight units: KG LBS
piprep options: Show Flight Critique

VATSIM ID:
IVA0 ID:

[save changes](#)

PERSONAL FILES

FIGURE 2.1

MY PROFILE

ACH0002 ■ Norbert Woeller 🇩🇪
Senior Officer

Flights: 52
Hours: 85 hrs 33 mins
Miles: 24686 nm
Points: 355

FS version: FS2004
VA-Hub: EDDK
Position: EDDH
last flight: ACH7639
last report: 2008-12-15 23:08:08

state:
home base:
date of birth: 1958-03-31
joined: 2007-05-04
contact:
password:
repeat:

VIRTUAL AIRLINE FOR UNICEF

www.air-child.com

ACH0002 Norbert Woeller
Senior Officer - 85:33 hrs

Signature banner: for use in forums
URL: <http://www.air-child.com/mysig/ACH0002.jpg>

Configuration file for FsPassengers:
➤ [Download here](#)

Configuration file for FS Flight Keeper:
➤ [Download here](#)

Configuration file for FsAcars:
➤ [Download here](#)

Configuration file for XAcars:
➤ [Download here](#)

PERSONAL FILES

FIGURE 2.2

FIGURE 2.3



2.1 Forum

You have to be logged in with your pilot ID. Go to 'pilots lounge' and select 'forum' (Fig 2.3). The forum display opens. If you are already logged into the VA the board's login form is filled with the correct values, so all you have to do is click 'Login'.

To write a new topic, click on a forum section and then on the 'New Topic' button.

- getting started
- dispatch centre
- hangar
- pilot's lounge**
- forum
- pilot roster
- my profile
- my reports**
- flight reports
- calendar

FIGURE 2.4

2.2 My Reports

You have to be logged in with your pilot ID. Go to 'pilots lounge' and select 'my reports' (Fig 2.4). You get the same overview about your reports via 'flight reports' and then 'my reports' (Fig 2.5).

You can click on the 'Flight Number' to get more information about that flight, or you can select the aircraft 'Reg-Nr', to get an overview of the flights that this aircraft has flown.

2.3 Pilot roster

Go to 'pilots lounge' and select 'pilot roster' (Fig 2.6). Here you will have an overview of all Air-Child pilots, their rank, points, flights and other information. If you are logged in, you will see your own name in a yellow colour. You can click on a 'Pilot ID' to get more details about this pilot.

- getting started
- dispatch centre
- hangar
- pilot's lounge
- flight reports**
- pireps
- live watch
- my reports**
- calendar
- flight training

Pilot Reports

FIGURE 2.5

ACH0002 - Norbert Woeller
pages: 1 | 2

Flight	Filed on	Pilot-ID	Aircraft	Reg.-Nr.	from	to	Out	In	Block	Distance	Status
ACH7639	2008-12-15 23:08	ACH0002	B737-700	D-AKWH	EGLL	EDDH	20:00	22:36	01:36	437 nm	
ACH1147	2008-12-10 22:55	ACH0002	B737-700	D-AEND	LOWS	EDDK	12:54	14:23	01:29	314 nm	
ACH1149	2008-12-10 20:47	ACH0002	B737-700	D-AEND	EDDV	LOWS	10:47	12:06	01:19	332 nm	
ACH7540	2008-11-25 00:18	ACH0002	B737-800	D-AGKI	EDDH	EGLL	15:47	16:11	01:24	428 nm	
ACH1694	2008-11-23 01:54	ACH0002	B737-800	D-AMRF	EDDK	LOWK	08:08	09:38	01:30	432 nm	
ACH1124	2008-11-07 00:06	ACH0002	B737-700	D-ARIE	EDDH	EDDF	12:53	14:17	01:24	271 nm	
ACH1122	2008-11-06 22:00	ACH0002	B737-700	D-ARIE	EDDK	EDDH	11:08	12:21	01:13	255 nm	

- getting started
- dispatch centre
- hangar
- pilot's lounge**
- forum
- pilot roster**
- my profile
- my reports
- flight reports
- calendar
- flight training

Pilot roster

FIGURE 2.6

Pilot ID	Name	Home	Ctry	Hub	now in	Rank	Points	Flights	Miles	Hours	Status
ACH0030	Norbert Pflug	LOWW	A	EHAM	YBBN	Captain	937	91	132262	309:34	active
ACH0004	Jan Vilijn	EHRD	NL	ESSA	LICC	Junior Captain	691	63	88153	232:26	active
ACH0020	Gottfried Reder	LOWL	A	EDDK	LJML	Junior Captain	731	114	58029	164:55	active
ACH0014	Gregor Deister	EDVE	D	EDDK	EDDF	Senior Officer	393	43	46093	121:40	active
ACH0009	Martin Vonk	EHSB	NL	EDDK	PANC	Senior Officer	362	35	47445	120:54	active
ACH0001	Peter Schindler	EDDS	D	EDDK	LOWI	Senior Officer	457	65	38267	119:00	active
ACH0008	Andrew Williams	EGNT	UK	EDDK	OOMS	Senior Officer	354	48	25991	94:47	active
ACH0002	Norbert Woeller	EDDF	D	EDDK	EDDH	Senior Officer	355	52	24686	85:33	active
ACH0059	Matej Sagmeister	RJAA	JAP	LOWW	LSZH	First Officer	221	30	14749	56:38	active

2.4 Discord

We use Discord for Company voice communication. It's freeware and you can download it here:

<http://www.discordapp.com>.

After you have installed Discord, run it and click the following link:

<https://discord.gg/Csh9etE>

You will be informed that your Information has been transferred to the Discord-App and you may then close the Browsertab or continue to the Browserbased version of Discord (Fig 2.7).

That is is now all you have to do is select your headset in Speech & Video settings and your are good to go.

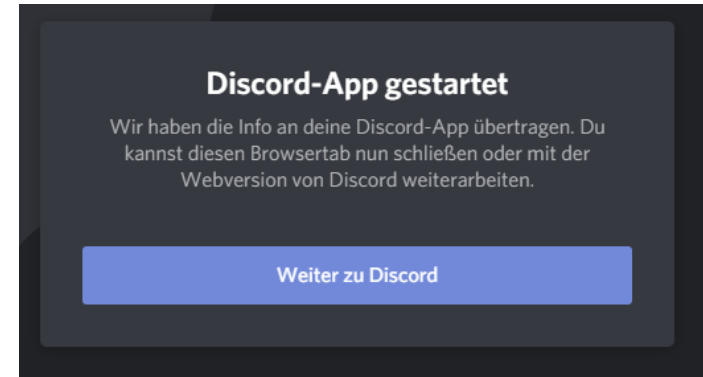


FIGURE 2.7

PILOT CAREER AND RANKING

3.0 Pilot careers

Air-Child offers you the possibility of three different pilot careers. These are the Basic Career, the Advanced Career and the Professional Career. When you register as a pilot for Air-Child, you will begin as a Student in the Basic Career. You can then decide if you wish to try out one of the other careers, or stay with the basic career.

3.1 Basic Career

With your registration you'll be assigned a pilot ID with a four digit number, e.g. ACH0023, and you will start at the rank of a Student. As soon as you have accumulated sufficient points, you will reach the next rank. You are free to fly any aircraft you wish in this career. Once you have booked a flight, this particular flight will be unavailable for booking by others until the flight results have been submitted to the Air-Child site using one of the available PIREP methods. For more information, please refer to [CHAPTER 7 REPORT FLIGHTS](#).

3.2 Advanced Career

With your registration you'll be assigned a pilot ID with a four digit number, e.g. ACH0023, and you will start at the rank of a Student. As soon as you have accumulated sufficient points, you will reach the next rank. The aircraft you can fly is dependent on your pilot rank:

- Student / Second Officer = DeHavilland Dash 7
ATR 72-500
- First Officer = all the above plus:
Boeing 737-700NG
Airbus A320-200
- Senior Officer = all the above plus:
Boeing 737-800NG
Airbus A321-200

Junior Captain = all the above plus:
MD-11
C130-Hercules

Captain / Senior Captain = all the above plus:
Boeing 747-400
Boeing 747-400F
Airbus A340-300

Once you have booked a flight, all flights for that specific aircraft will be unavailable for booking by others until the flight results have been submitted to the Air-Child site using one of the available PIREP methods. For more information please refer to [CHAPTER 7 REPORT FLIGHTS](#).

In this career all aircraft have to depart from the airport of their last arrival.

3.3 Professional Career

Same as the Advanced Career except: Once you reach the required points to progress to the next rank, you must sit an examination. Only on passing the exam will you proceed to the next rank. (Note: the examinations are not completed yet, so at the moment, the Professional Career is the same as the Advanced Career. We are working on this).

3.4 Ranking

You receive points for each flight you complete, and also for the flight time of the flight.

The points are:
3 points for each completed flight.
1 point for every 30 minutes of flight time.

Here are some examples:

	FLIGHT TIME	POINTS	TOTAL FLIGHTS	POINTS	TOTAL POINTS
A	12:40	25	7	21	46
B	18:35	37	3	9	46
C	72:15	144	26	78	222
D	72:00	144	15	45	189
E	51:55	103	20	60	163
F	125:10	250	20	60	310

Pilot A has flown 7 short range flights, whereas Pilot B has flown 3 long range flights. Although Pilot B has flown more hours, both pilots have the same point's total.

Pilots C and D have flown similar hours, so they receive the same points for the flight time. However Pilot C has flown more short range flights, so he gets more points in total.

Pilots E and F have flown the same number of flights. Pilot F has flown more long range flights, so he receives more points in total due to a greater flight time.

Why? Your flying skills are not only growing by flying hours. The workload for a start or landing is much higher than flying thousands of miles on cruising level. Our ranking system considers this.

Ranking	Points
Student – Second Officer	50
First Officer	150
Senior Officer	450
Junior Captain	900
Captain	1500
Senior Captain	2200

HANGAR

4.0 Air-Child Fleet

We are operating both passenger and cargo aircraft. The C-130 will be flying some special operations, which will be displayed in the news section each time such an event is held.

4.1 Fleet Overview

Go to 'hangar' and select 'fleet overview' (Fig. 4.1). This gives you a list of all Air-Child aircraft. Clicking on the Registration (tail number) or the 'Name' of an aircraft will direct you to the aircraft data card where you will find detailed information about the aircraft and some self explanatory options. Clicking on the right hand column, will show all flights for that particular aircraft.

4.2 Fleet Map

Go to 'hangar' and select 'fleet map' (Fig. 4.2). On the fleet map you will have a visual overview of all current aircraft positions. You can zoom in or out by clicking on the '+' or '-' icons, or by using your mouse wheel. You can pan around the map using the arrow icons, or by dragging the map with your left mouse button pressed. Clicking on an aircraft icon will show information about the airport and the planes you can find there. Once you click on the airport name you will see the destinations and schedule for that specific airport. Clicking on the aircraft name will direct you to the aircraft data card of this aircraft.

4.3 Repaints

Go to 'hangar' and select 'repaints'. Here you will find downloadable repaints in ZIP and RAR format for the most popular payware aircraft (such as PMDG, Feelthere etc.) or complete download packages for freeware products (like IFDG, POSKY etc.).

Also you will find some aircraft screenshots.

- getting started
- dispatch centre
- hangar
- fleet overview
- fleet map
- repaints
- pilot's lounge
- flight reports
- calendar
- flight training
- documents
- statistics
- home

- getting started
- dispatch centre
- hangar
- fleet overview
- fleet map
- repaints
- pilot's lounge
- flight reports
- calendar
- flight training
- documents
- statistics
- home

FLEET OVERVIEW

Airbus		Type	Reg.	Name	Base	Pos.	FOB	miles	hours	Status
A320-200	SX-ALE	A320-200	A320-200	Alla Levonyan	LGAV	LGAV	0 kg	0	0	regular
A320-200	D-ASTE	A320-200	D-ASTE	Amii Stewart	EDDK	LIRF	3747 kg	1901	6:43	regular
A320-200	D-AKID	A320-200	D-AKID	Angelique Kidjo	EDDK	EDDK	2723 kg	3197	8:49	regular
A320-200	D-ALIN	A320-200	D-ALIN	Astrid Lindgren	ESSA	EDDK	2178 kg	1972	5:26	regular
A320-200	D-ARON	A320-200	D-ARON	Cornelia Funke	LGAV	LSZH	2516 kg	2997	9:54	regular
A320-200	SE-DEL	A320-200	SE-DEL	Emil i Lönneberga	ESSA	ESSA	9951 kg	1426	3:43	regular
A320-200	D-AROW	A320-200	D-AROW	J.K. Rowling	EDDK	EDDK	3488 kg	1983	6:06	regular
A320-200	D-ABOH	A320-200	D-ABOH	Karl-Heinz Böhm	EDDK	EGNT	585 kg	987	3:32	regular
A320-200	OE-LNU	A320-200	OE-LNU	Leo Nucci	LOWW	LOWW	4332 kg	1130	3:15	regular
A320-200	D-AULL	A320-200	D-AULL	Liv Ullmann	ESSA	LOWW	5152 kg	1058	3:25	regular
A320-200	PH-PVV	A320-200	PH-PVV	Paul van Vliet	EHAM	LJLJ	4869 kg	1974	7:16	regular
A320-200	D-AUST	A320-200	D-AUST	Peter Ustinov	EDDK	LIRF	4188 kg	1292	4:38	regular
A320-200	D-ABRO	A320-200	D-ABRO	Pierce Brosnan	EDDK	EGLL	4677 kg	932	2:59	regular
A320-200	D-APUM	A320-200	D-APUM	Pumuckl	LGAV	LGAV	0 kg	0	0	regular
A320-200	OE-TBR	A320-200	OE-TBR	Thomas Brezina	LOWW	EDDF	3396 kg	3087	9:32	regular
A320-200	PH-YMA	A320-200	PH-YMA	Vita Mavric	EHAM	EHAM	0 kg	0	0	regular
A320-200	PH-BHO	A320-200	PH-BHO	Bram Hoogland	EHAM	LIRF	3630 kg	5883	15:35	charter
A320-200	CS-LAL	A320-200	CS-LAL	Luis Alves	LPPT	LEMD	5742 kg	1615	6:50	charter
A320-200	D-APBL	A320-200	D-APBL	Philipp Blumenstein	EDDL	LIME	2670 kg	6075	18:15	charter
A320-200	D-AZSG	A320-200	D-AZSG	Zlatan Stipisic Gibonni	EDDK	LOWW	2864 kg	5874	16:59	charter

FIGURE 4.1

fleet map

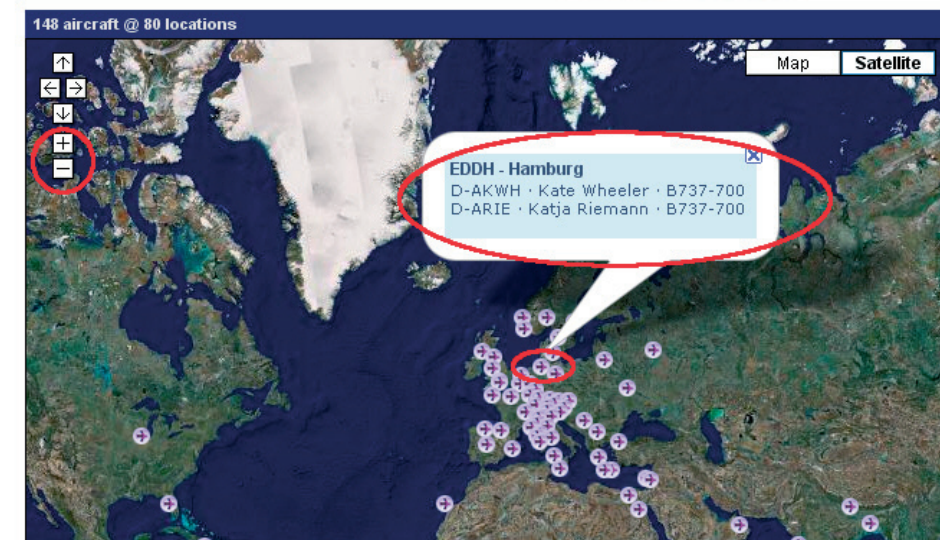


FIGURE 4.2

BOOKING FLIGHTS

5.0 Scheduled Flights

To book a flight, you must be logged into the Air-Child web-site using your pilot ID and password.

Go to *'dispatch centre'*, and select *'flight search'* (Fig 5.1). You will be presented with 20 random flights. You can search for flights **from** a specific airport, **to** a destination, by **aircraft type** or by **aircraft registration**.

Selecting the bottom edge with little *'white triangle'* will open more search options.

You can do a combined search (Fig 5.2): e.g. click the *'checkbox'* left of *'combined search'*, select EDDK in the *'from'* pulldown list, and LEMD in the *'to'* pulldown list to find all flights from Cologne to Madrid. You now can select an aircraft to more specify your search and so on.

To find out what flights are scheduled for the current day, click the *'checkbox'* left of *'check to display only flights scheduled for current day'* (Wednesday in the example to the right). To filter the flights for a different day, click on the current day and select the day of your choice.

In the example, all flights for the 737-700 with the registration D-ALAN are selected. If you click on a flight a small screen will open with additional information about that flight, such as the scheduled days and the scheduled departure and arrival times. On the right side you can book the flight. Clicking on the aircraft registration within the screen will take you to the aircraft data card where you can check the status of that particular aircraft.

To close the screen, click on the flight again (yellow bar). To book the currently displayed flight, click on the *'orange dot'* on the right side (fly now).

getting started
dispatch centre
 flight search
 charter flight
 flight briefing
 my bookings
 hangar
 pilot's lounge

from -- to -- aircraft -- registration --

20 random flights

FLIGHT	REG	TYPE	FROM	TO	STD	STA	STE
ACH1496	D-ATYL	B744	SBGL	SAEZ	21:45	00:25	02:40
ACH1389	D-AMAU	B737	ESSA	EDDK	21:10	23:10	02:00
ACH2146	SE-MPE	F100	LOWI	LEVX	10:20	13:00	02:40
ACH2083	SE-DRI	B738	FVRA	ESSA	21:35	22:35	01:00

FIGURE 5.1

getting started
 dispatch centre
 flight search
 charter flight
 flight briefing
 my bookings
 hangar
 pilot's lounge
 flight reports
 calendar
 flight training
 documents
 statistics
 home

from -- to -- aircraft -- registration --

combined search
 check to display only flights scheduled for Friday

10 flights for D-ALAN

FLIGHT	REG	TYPE	FROM	TO	STD	STA	STE
ACH1346	D-ALAN	B737	EDDK	LEMD	06:15	08:30	02:15

Air-Child flight ACH1346
 Aircraft: B737-700 Lang Lang -- D-ALAN
 scheduled days: Mon | Tue | Wed | Thu | Fri | Sat | Sun

departure: 06:15 EDDK Cologne
 arrival: 08:30 LEMD Madrid

ACH0051
 Quick Booking
 fly now:

Book your flight here, then go to the Briefing Room for further options.

FIGURE 5.2

After you have booked a flight, this flight will be marked with a 'green dot' (Fig 5.3). That means the flight is unavailable for booking by all other Air-Child pilots until the flight has been reported. Booked flights that are not reported within one day will be automatically cancelled and are then free again for booking.

If you are the pilot who has booked the flight with a green dot, you can cancel the flight in the same way you booked it. All other flights for this aircraft will be marked with a red dot. If you are flying in the basic pilot career, you can still book one of these flights. If you are flying in one of the professional pilot careers you will not be able to book these flights until the flight marked with the green dot has arrived at its destination and has been reported to the site.

Again: You must report a booked flight within 3 days; otherwise the booking will be automatically cancelled.

Next step after booking the flight, go to 'my bookings' (Fig 5.4). Here you will find the flight (or flights) that you have booked. If you want, you can also cancel a flight (or flights) here. Checkmark a flight and click 'unbook selected flights'. Clicking on a flight will direct you to the briefing room. For more information about the Flight Briefing, please refer to [CHAPTER 6.0 SCHEDULED FLIGHT BRIEFING](#).

5.1 Charter Flights

To book a charter flight, you must be logged into the Air-Child website using your pilot ID and password. Go to 'dispatch centre', and select 'charter flight' (Fig 5.5). A list with all of the Air-Child charter aircraft will open. If a plane is booked by another Air-Child pilot, this plane is unavailable for booking by any other Air-Child pilot, until the flight has been reported. In the example to the right, the A320-200 Luis Alves is booked for a flight from EBBR to EDDV, the pilot who has booked this flight (PIC) is the pilot with the number ACH0073. The red dot tells you that this plane is not available for booking.

To book a plane, click on it, and you will be taken to the charter briefing. For more information about the Flight Briefing, please refer to [CHAPTER 6.1 CHARTER FLIGHT BRIEFING](#).

- getting started
- dispatch centre
- flight search
- charter flight
- flight briefing
- my bookings
- hangar
- pilot's lounge
- flight reports
- calendar
- flight training
- documents

from -- to -- aircraft -- registration --

10 flights for D-ALAN

FLIGHT	REG	TYPE	FROM	TO	STD	STA	STE	
ACH1346	D-ALAN	B737	EDDK	LEMD	06:15	08:30	02:15	●
ACH1347	D-ALAN	B737	LEMD	EDDK	09:50	12:05	02:15	●
ACH1348	D-ALAN	B737	EDDK	ESMS	12:50	14:05	01:15	●
ACH1350	D-ALAN	B737	ESMS	EYVI	14:50	16:15	01:25	●
ACH1351	D-ALAN	B737	EYVI ✕	ESMS	17:00	18:25	01:25	●
ACH1349	D-ALAN	B737	ESMS	EDDK	19:10	20:25	01:15	●
ACH1352	D-ALAN	B737	EDDK	ENBR	12:50	14:35	01:45	●
ACH1354	D-ALAN	B737	ENBR	ENAL	17:50	18:30	00:40	●

FIGURE 5.3

- getting started
- dispatch centre
- flight search
- charter flight
- flight briefing
- my bookings
- hangar

booked flights for ACH0002

Click on a booking below. You will then be taken to the briefing and flightplan.

BOOKING DATE (UTC)	FLIGHT	REG	FROM	TO	DEP	ETA	ETE	
23.12.2008 23:45:50	ACH1346	D-ALAN	EDDK	LEMD	06:15	08:30	02:15	<input type="checkbox"/>

unbook selected flights

FIGURE 5.4

- getting started
- dispatch centre
- flight search
- charter flight
- flight briefing
- my bookings
- hangar
- pilot's lounge
- flight reports
- calendar
- flight training
- documents
- statistics

44 charter planes are operative

Select a plane in the list below. You will then be taken to the charter briefing.

REG	TYPE	NAME	POS	MILES	STATUS
PH-BHO	A320-200	Bram Hoogland	LIRF	5883	99.53%
CS-LAL	A320-200	Luis Alves	LEMD	1615	99.88%
Flight ACH7663, flying from EBBR to EDDV, ETD 06:20, ETA 07:20, PIC: ACH0073					
D-APBL	A320-200	Philipp Blumenstein	LIME	6075	99.59%
D-AZSG	A320-200	Zlatan Stipisic Gibonni	LOWW	5874	99.58%
D-ALAM	A321-200	Bernard Lama	EDDB	2680	99.81%
PH-DVB	A321-200	David Van der Blonk	EHAM	0	100%
D-AENO	A321-200	Erki Nool	EGLL	3078	99.78%
EC-CGO	A340-300	Carlos Gonzalez	LFBT	931	99.93%
D-AJLA	A340-300	Juha Laukkanen	OSDI	16522	98.85%
PH-MVO	A340-300	Martin Vonk	PANC	24612	98.26%
G-ANWI	ATR72-500	Andrew Williams	OOMS	5453	99.57%

FIGURE 5.5

FLIGHT BRIEFING

6.0 Scheduled Flight Briefing

The briefing room shows all the details for a chosen flight and lets you adjust some of it.

Basic data (Fig 6.1):

Here you have basic information about the pilot (you), the flight itself and the aircraft.

Flight briefing for Norbert Woeller - Thursday, 25 December 2008, 23:55 UTC

Pilot-ID: ACH0002
Flight: ACH1346 / EDDK-LEMD / Alternate: LEVD
Aircraft: Boeing B737-700, D-ALAN "Lang Lang"

FIGURE 6.1

Departure Time <input type="text" value="06:15"/> UTC	Arrival Time <input type="text" value="08:30"/> UTC	Taxi Time (in/out, estimated) <input type="text" value="20"/> Min
Passengers <input type="text" value="147"/> / 148	Baggage <input type="text" value="3675"/> kg	Cargo <input type="text" value="0"/> kg

FIGURE 6.2

Weather (decoded METAR)

Departure: EDDK, Koeln / Bonn, Germany -- Dec 25, 23:20 Z
 Winds 070° at 5 kts
 Temperature 0°C / Dewpoint -5°C
 QNH 30.59 / 1036 mb
 Visibility > 10 km
 Clouds: clear skies

Arrival: LEMD, Madrid / Barajas, Spain -- Dec 25, 23:30 Z
 Winds 000° at 0 kts
 Temperature -1°C / Dewpoint -3°C
 QNH 29.97 / 1015 mb
 Visibility > 10 km
 Clouds: clear skies

[full METAR / TAF](#)

FIGURE 6.3

Times and weights (Fig 6.2):

Departure time is the scheduled time. Feel free to change it. Arrival time will be adjusted automatically after you click on the 'update briefing' or 'submit to flight plan' button. Note that this is only for the purpose of realism. You'll have to set your departure time in Flight Simulator anyway. Once you submit your flight report it will show the actual times used in the simulator, not the ones shown here. If you pre-file your plan to VATSIM the ETD in the VATSIM form will always be set to real time plus 30 minutes.

20 minutes taxi time is the default. If you need more or less time you can change it also. The number of passengers is randomly selected and can be changed as well. Baggage weight will be corrected automatically after you click on the 'update briefing' or 'submit to flight plan' button. The same applies to the cargo weight. Make sure your plane is not overweight (see also [CHAPTER 6.2 COMPANY FLIGHT PLAN](#)).

Weather (Fig 6.3):

Here you have the decoded weather report for the departure and arrival airports. Clicking on 'full METAR / TAF' will show the raw METAR and TAF (terminal airfield forecast) report. These are real world data taken at the same time you bring up the briefing.

Note: At the moment it's not possible to provide a decoded TAF as this is much more complex, compared to the METAR.

Routes (Fig 6.4):

Company Routes are named by the ICAO codes of the departure and arrival airports followed by a 2 digit number. The first number gives you information about whether the route is planned on Low or High altitude airways.

0 means that the route is planned either on high level or a combination of high and low level airways (first and/or final route segments can be at low altitude). These routes are usually flown at FL246 and above (except the low segments).

1 means that the route is planned entirely on low level airways, typically between 6000ft and FL245.

The second digit is the sequential number of the Company Route. For example (Fig 6.4), the briefing offers you three different high altitude routes from Cologne (EDDK) to Madrid (LEMD). If there is more than one Company Route available, you have to select one.

(Normally you would do this according to the prevailing en-route winds. As we are not (yet) able to calculate those in re-

Company Routes (choose one)

- 1: EDDKLEMD01 FL 380 KUMIK Y854 BOMBI UN850 NATOR UN869 ZAR TERSA
- 2: EDDKLEMD02 FL 380 NOR Y868 MAPAD J906 NAVAK UY283 LNO UZ707 RESMI UN857 BAN
- 3: EDDKLEMD03 FL 380 NOR Y868 MAPAD J906 NAVAK UJ906 SOGRI UM617 CIV UN872 TERPO UT176 DESAB UN867 BLV UL14 NEA UN864 ORBIS

FIGURE 6.4

lation to route directions - and that way make a suggestion for the most efficient route -, you have to pick one on your own).

You can change the recommended flight level by clicking on the up or down arrows. The flight level will change in appropriate steps, according to separation regulations. If, for some reason, this doesn't suit you can manually edit the flight level by clicking on the number and replacing it with the appropriate one. Note that cruising altitudes will affect

fuel calculation in the Company Flight Plan. For more information about flight levels, please go to the 'documents' section and download the 'Flight Level Conversion Sheet'.

If you have changed any of the values, you can press the 'update briefing' button to view all changes. If everything is correct, press 'create flightplan' and you will be directed to the Company Flight Plan.

6.1 Charter Flight Briefing

Basic data:

Here you have basic information about the pilot (you), the flight number and the aircraft. (Fig 6.5)

Airports and Flight Level:

Here you have to enter the ICAO code of the departure and arrival airport, as well the ICAO code of the alternate airport (optional). Also you have to enter your flight level.

After you have entered all data, the program calculates the direct distance and the flight time.

Times and weights:

Departure time is set to the UTC time that the booking was made. You may change the departure time, and the arrival time will automatically adjust after you click on 'update briefing'. Note that this is only for the purpose of realism. You'll have to set your departure time in Flight Simulator anyway. Once you submit your flight report it will show the actual

Charter briefing for Norbert Woeller - Friday, 26 December 2008, 23:15 UTC

Pilot-ID: ACH0002
Flight: ACH7681
Aircraft: D-ALAM / A321-200

Departure ICAO EDDK	Arrival ICAO EGCC	Alternate EGNM	Flight Level 380
------------------------	----------------------	-------------------	---------------------

Cologne - Manchester / 378 NM / 01:08 hrs

Departure Time 23:15 UTC	Arrival Time UTC	Taxi Time (estimated) 20 Min
Passengers 164 / 220	Baggage 4100 kg	Cargo 0 kg

Route (optional)
 NOR Y868 MAPAD J906 NAVAK UJ906 SOGRI UL608 DENUT UL610 LAM UL10 BPK DCT BUZAD UT420 WELIN UN57 TNT

FIGURE 6.5

times used in the simulator, not the ones shown here. 20 minutes taxi time is the default. If you need more or less time it can also be changed. The number of passengers is randomly selected and can be changed as well. Baggage weight will be corrected automatically after you click on the 'update briefing' button. The same applies to the cargo weight. Make sure your plane is not overweight (see also [CHAPTER 6.2 COMPANY FLIGHT PLAN](#)).

Route:

Here you can enter a route, but this is optional. There are some good resources where you can find a route, if you don't have one for your flight:

- <http://www.vatroute.net/>
- <http://www.vroute.net/>
- <http://www.simroutes.com/>

After you have entered all data, press 'update briefing'. The weather report will appear.

Weather (Fig 6.6):

Here you have the decoded weather report for the departure and arrival airports. Clicking on 'full METAR / TAF' will show the raw METAR and TAF (terminal airfield forecast) report. These are real world data taken at the same time you press the 'update briefing' button.

Note: At the moment it's not possible to provide a decoded TAF as this is much more complex, compared to the METAR.

If everything is correct, press 'submit to flightplan' and you will be directed to the Company Flight Plan.

Weather (decoded METAR)

Departure:	EDDK, Koeln / Bonn, Germany -- Dec 26, 23:20 Z Winds 090° at 3 kts Temperature -4°C / Dewpoint -7°C QNH 30.62 / 1037 mb Visibility > 10 km Clouds: clear skies
Arrival:	EGCC, Manchester Airport, United Kingdom -- Dec 26, 23:20 Z Winds 040° at 6 kts Temperature -1°C / Dewpoint -3°C QNH 30.71 / 1040 mb Visibility > 10 km Clouds: clear skies

[full METAR / TAF](#)

update briefing
submit to flightplan

FIGURE 6.6

6.2 Company Flight Plan

Now here's the complete flight plan, including fuel and weight breakdown, which you can print out and use for your cockpit preparations and enroute calculations.

The first line (Fig. 6.7A) holds the vital information about flight number, name of the Company Route and date of issue (yyyy/mm/dd).

(Fig. 6.7B) Here you see information about the aircraft type and registration. To the right are your scheduled times. Departure is planned at 06:15 Z and arrival should be at 08:43 Z. These are UTC (or Zulu) times, so keep that in mind when you enter a local time in Flight Simulator. Next to that you can (once you've printed out the plan) note down the times you actually depart and arrive. ATD is when you leave the stand, ABN when you are airborne, T/D the touchdown, and ATA the arrival at the stand.

(Fig. 6.7C) Here's the payload information including passengers, baggage, cargo and the corresponding payload (total of all weights).

(Fig. 6.7D) In this part of the flight plan you will get information about the distance to fly in NM, the flight level and the estimated block time (gate to gate). It also shows the name of the dispatcher and that of the pilot in command (you).

(Fig. 6.7E) This group now gives you all the information about required fuel quantities and times as well as the respective fuel weight and other weights on the right side. Let's start with the fuel:

- First is the taxi fuel, based on the taxi time you previously set.
- Next is the trip fuel required to get to the destination (LEMD). Second column shows the estimated flight time. In this case we need 6249 kg fuel to fly from Cologne to Madrid in 2 hours and 8 minutes.
- The next row shows the contingency fuel. The contingency

COMPANY FLIGHTPLAN ACH1346		EDDKLEMD.01	2008/12/27	FIGURE 6.7A	
Flight	EDDK - LEMD	Alt: LEVD		FIGURE 6.7B	
Aircraft	B737-700	STD 06:15	ATD	ABN	
Type	D-ALAN	STA 08:43	T/D	ATA	
PAX: 147	Baggage: 3675 kg	Cargo: 0 kg	=> Payload: 15435 kg	FIGURE 6.7C	
ROUTE INFORMATION		CREW INFORMATION		FIGURE 6.7D	
Dist	924 NM	02:28 h	Disp	Norbert Woeller	
FL	380		PIC	Norbert Woeller	
FUEL CALCULATION - all in KG		WEIGHT/FUEL BREAKDOWN - all in KG		FIGURE 6.7E	
Taxi	720	00:20 h	ZFW	53162	54657
Trip	6249	02:08 h	TOF	10097	20884
Contingency	312	00:06 h	TOW	63619	69400
Alternate	1011	00:21 h	TIF	6949	
Final Reserve	1465	00:30 h	LW	57370	58059
MINIMUM	9757	03:25 h	REM	3848	
EXTRA	700				
TOTAL	10457		<input type="button" value="calc"/>	<input type="button" value="reset"/>	
RTE VIA				FIGURE 6.7F	
KUMIK Y854 BOMBI UN850 NATOR UN869 ZAR TERSA					
WEATHER				FIGURE 6.7G	
Departure:	METAR: EDDK 272150Z 07004KT CAVOK M06/M07 Q1034 NOSIG				
	TAF: EDDK 271700Z 2718/2824 11006KT CAVOK				
Arrival:	METAR: LEMD 272200Z VRB02KT CAVOK 05/M01 Q1013 NOSIG				
	TAF: LEMD 271700Z 2718/2818 14008KT CAVOK TX10/2814Z TN01/2805Z BECMG 2800/2802 04005KT BKN035 BECMG 2810/2812 14008KT TEMPO 2814/2816 FEW025 BKN030				
Alternate:	METAR: LEVD 272200Z 07005KT CAVOK 02/00 Q1011				
	TAF: n.a.				
Download Flightplan for FS2004				FIGURE 6.7H	
File Plan to VATSIM / ID: 813198					

- fuel is 5% of the Trip Fuel
- The alternate airport for this flight is LEVD, and we would need 1011 kg of fuel to divert there in 21 minutes.
- The Final Reserve (or Holding Fuel) is based

- on 30 minutes (jets) or 45 minutes (props) flight time.
- Finally there's the Extra Fuel, on which the pilot decides (usually around 20-30 minutes). It depends on parameters such as

winds aloft, weather conditions, traffic load etc. To enter the EXTRA fuel, click in the field to the right of EXTRA, enter the amount of fuel to add and press the 'calc' button. To reset the EXTRA fuel, click on the 'reset' button.

[Download Flightplan for FS2004](#)

By clicking on this line you can download the FS-Flightplan for your flight.

[VATSIM File Plan to VATSIM / ID: 813198](#)

By clicking on this line you will be taken to the VATSIM Flight Plan Management. Your flightplan is ready to use, except for your VATSIM ID and VATSIM Password. If you are using Firefox, you can save your ID and Password, so next time that you click on the 'File Plan to VATSIM' line, you will only need one click to send your plan to VATSIM.

Remember: You have to enter your VATSIM ID in your profile, to see the 'File Plan to VATSIM' line

In this example (Fig. 6.7E) we have add 700 kg of EXTRA fuel **If we put all this together, the minimum fuel needed to safely complete this flight is therefore 10457 kg with a maximum time of 3 hours and 25 minutes before all tanks will be empty.**

The weight calculation on the right (Fig. 6.7E) shows the breakdown of weights during the flight. We start out with a zero fuel weight (ZFW) of 53162 kg, plus 10097 kg fuel at take-off (TOF - that's the calculated 10457 kg minus 360 kg for taxi) to reach a take-off weight (TOW) of 63619 kg. We will burn 6949 kg trip fuel (TIF) during the flight, which results in a landing weight (LW) of 57370 kg. Without any holdings or diversions we should still have 3848 kg fuel remaining (REM) in tanks after arrival.

To the right of these weights, the corresponding maximum allowed is indicated. Note: Should you exceed any of the maximum weights, the actual weight will be displayed in red. In that case, go back to the briefing, throw out some passengers or cargo or try to cruise at a higher level.

Next comes the route you will take on your flight (Fig. 6.7F). This abbreviated notation indicates the airways and intersections you will use. Here it goes from Cologne either directly or following a departure procedure to KUMIK, then via the Y854 airway to BOMBI. From there you have to take the UN850 airway to NATOR, the UN869 to ZAR and then direct to TERSA which is the transition point for the arrival route to your destination airport.

Again the weather report with METAR and TAF for departure, arrival and alternate airports (Fig. 6.7G). We only display raw data here, since it holds more information than the decoded reports.

REPORTING FLIGHTS

7.0 Report Flights

Air-Child offers you four add-on interfaces through which you can report your flights.

- FS Flightkeeper (payware)
- FsPassengers (payware)
- XAcars (freeware)
- FSAcars (freeware)

7.1 FS Flight Keeper

We strongly encourage all VA pilots to use FS Flight Keeper as the reporting system of their choice. Simply because it provides easy handling, exact logging, reliable reporting and a wealth of tools and functions you will never want to fly without once you get used to. Think of it as your personal FDR or Black Box. Every action you take in the cockpit and many external events, such as weather and pressure changes or TCAS alerts, will be recorded literally “on the fly”. During flight you may watch your plane move on the world map, along with AI planes or multiplayer aircraft and even ATC controllers if connected to VATSIM. (The latter shouldn’t move, of course.)

All your flights are registered in your personal logbook and can be displayed in detail at any time you like. Add Flight Keeper’s ACARS device to any FS cockpit, including add-on aircraft, and display weather reports and forecasts, airport and runway information or ILS frequencies without leaving the cockpit. On top of that Flight Keeper offers special environmental sound sets (like boarding passengers etc.), a messaging service for online communication between pilots and a snapshot tool to make screenshot capturing easier than ever.

Flight Keeper is payware but in cooperation with Aerosoft we are granted a discount from the retail price for all Air-Child members. Please contact info@air-child.com for further information.

Installation

Order FS Flight Keeper from here <http://www.aerosoft.de> or download it from <http://www.flightkeeper.net> and follow installation instructions.

Pre-requirements

After Flight Keeper is fully installed and registered, there are two more steps you have to go through before you can actually start the application.

1. Go to your Flight Keeper installation folder (by default this should be named “FS Flight Keeper”) and find the file *Airlines.cfg*. Make a backup of this file, then open it with Notepad (or any other text editor) and do a search for “ACH”. You may or may not find an entry for an airline with that ICAO code (“ACH” was used for a cargo airline based in Liberia who lost their license back in 2002). If that line exists delete and replace it by this line:

```
--,ACH,Air-Child,AIR-CHILD
```

If it doesn’t exist, just add the above line somewhere in the list. Save the file and exit.

Note: In FSFK3.0 you will find the *Airlines.cfg* normally in: C:\Documents and Settings\user name\My Documents\Fs Flight Keeper.

2. Log in to the Air-Child website using your pilot ID and password. Go to ‘*pilot’s lounge*’ and then ‘*my profile*’ (you have to be logged in to see it). In the ‘*personal files*’ section, click on the Flight Keeper Configuration and save the zip file to your local disk. Unpack the configuration file and move it to the subfolder ‘*Templates*’ of your FS Flight Keeper installation folder.

All PIREP tools described here are compatible with MS Flight Simulator Versions FS2004 and FSX. Additionally XAcars is compatible with X-Plane versions 8 and above.

Configuring Flight Keeper

Now you are ready to start Flight Keeper. But before you can start recording and reporting flights, there are still some steps to do. Flight Keeper needs to know who you are and with which airline you're "employed". So let's start some configuration:

1. Open FS Flightkeeper
2. Open the Options Menu (Fig 7.1)
3. Select 'Templates/Email'. (Fig 7.2) Go to 'Virtual Airline Settings' and select 'air-child-cfg.txt' Click OK

FS Flight Keeper has a rather unique feature that allows detecting of the correct aircraft position. This is done by analyzing the Airport Facility Data (AFD), also referred to as AFCAD, located in your scenery folders of your Flight Simulator installation and storing this data in a special cache. To refresh the cache you just need to click on the menu 'Rebuild Scenery Cache' under the main menu 'Tools'.

Click on 'Pilots' and select 'New Pilot' (Fig 7.3). A new window will appear. Enter your name under which you have joined Air-Child. (Email is optional). Airline: you can write Air-Child for example. Pilot ID and Password is important. You have to use your Pilot ID (ACHxxxx) and the password (the one with which you log in to the VA site). Click OK. Close FS Flight Keeper.

If you have not booked a flight yet, please go to the AIR-CHILD Website and book a flight from the Timetable or a Charter flight as described in [CHAPTER 5.0](#) and [5.1](#). Get your Company Flightplan, download the FS-Flightplan and copy it to your "Flight Simulator Files" Folder.

Start the Flight Simulator. Place your aircraft at the Gate of your origin. Shut down the engines (if they are running) and set the parking brake. Make sure that you have done all settings like weather, time, fuel and so on.



FIGURE 7.1

Export Templates / Email Configuration

Select the templates you want to use for your exports and set your email configuration

FIGURE 7.2

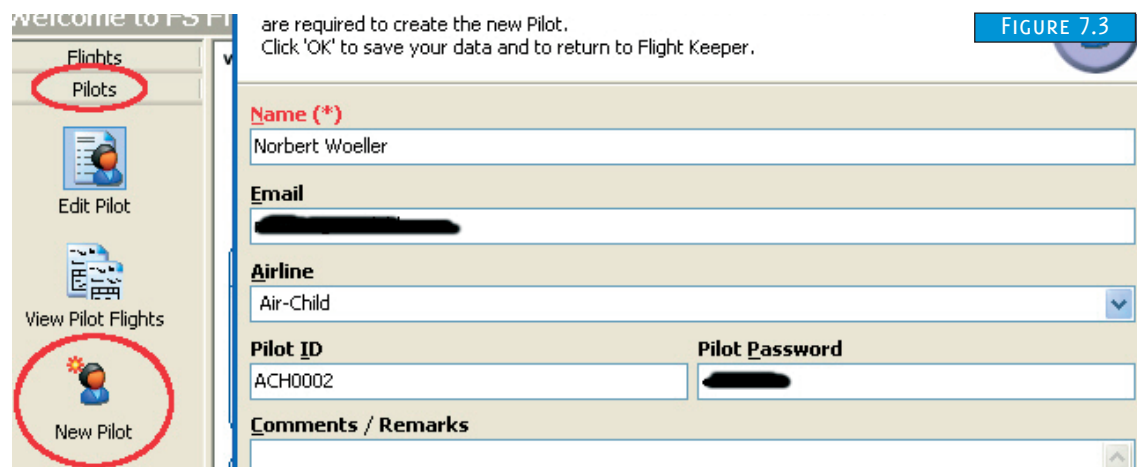
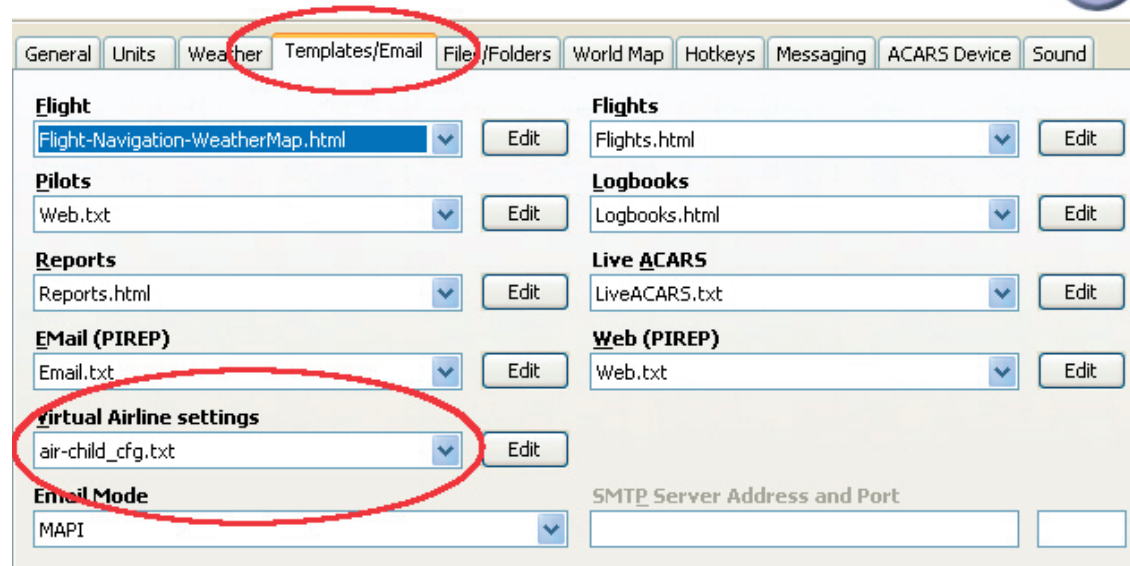


FIGURE 7.3

Open FS Flight Keeper. Select 'Flights' / 'New Flight' (Fig 7.4). Click on 'Connect to flight simulator' (over the 'General' Tab)

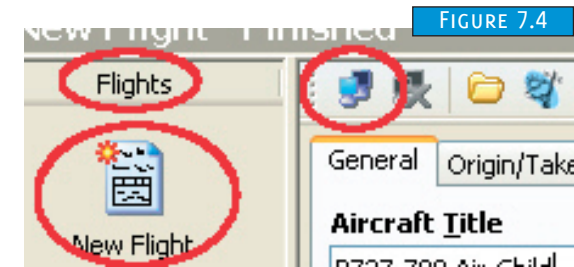


FIGURE 7.4

Click on the 'Open Flight Plan' icon (over the Origin/Takeoff Tab) (Fig 7.5) and select the flightplan you have downloaded. In the field 'Flight Number' enter the correct flight number (in this case ACH1346) as displayed in your company flight plan (this is very important!). You may enter the flight number with or without the prefixing 'ACH'. Select the AIR-CHILD Pilot you created. If you like fill in other data like the Alternate, Passenger, Cargo etc.

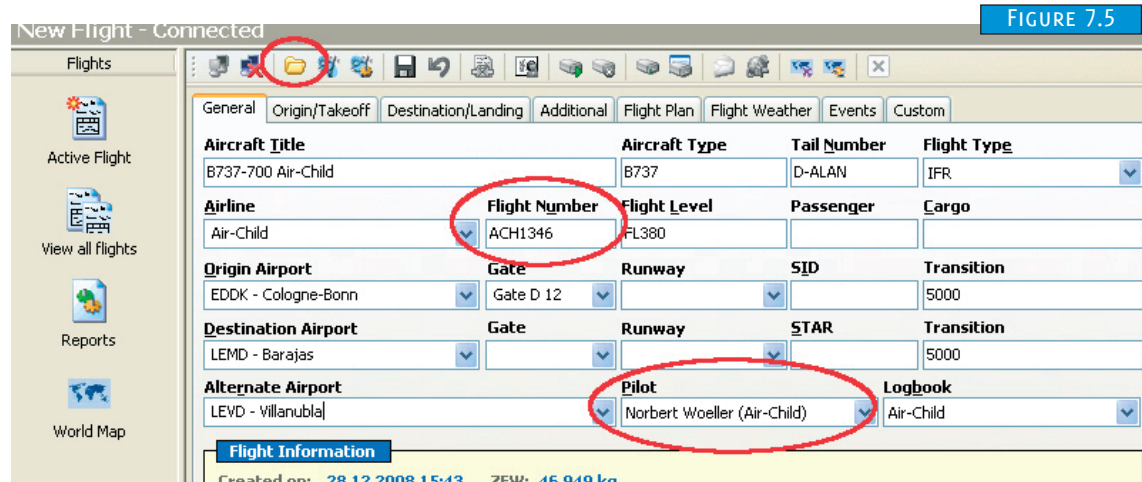


FIGURE 7.5

Now connect to the AIR-CHILD ACARS Server (Fig 7.6). Click on the 'green triangle' (over the Additional Tab)

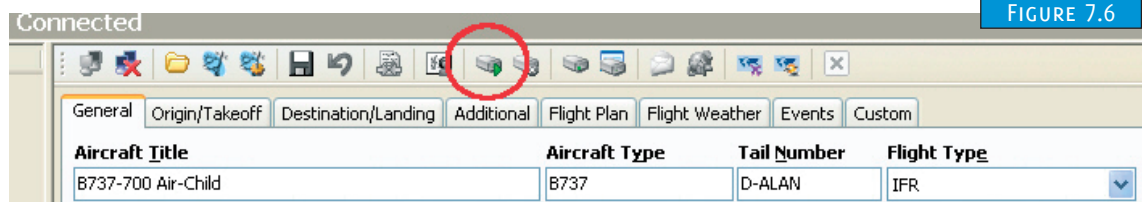


FIGURE 7.6

Now you can view your flight on the Air-Child live-watch page. (Please refer to CHAPTER 8.2 live watch section to get more info about this feature).

Once arrived at the destination set the parking brake and shut down the engines.

Press the green 'Send the flight to a Web Service (PIREP)' Button (over the Flight Weather Tab) (Fig 7.7)



FIGURE 7.7

That's it. You now can view your flight report on the Air-Child Website in the pireps section.

FIGURE 7.8



7.2 FsPassengers

FsPassengers is a payware addon available from www.fspassengers.com. The program simulates the effect of carrying passengers on your aircraft. Once you have reached your destination, FsPassengers produces a report based on your flight performance. This report can be used to log your flights onto the Air-Child pipe. FsPassengers does not provide real time data for live tracking, e.g. through GoogleMaps.

The following tutorial shows how to install the FsP config file, and how to transmit the report to the Air-Child servers.

Installing the FsP config file.

Log into the Air-Child website, and go to your personal profile, (*pilot's lounge* > *my profile*) and click the 'Personal Files' tab. Then click on the download link for FsPassengers (Fig 7.8).

Once you have downloaded and unpacked the file, you will notice a folder structure

```
FsPassengers
  config_va
    air-child.cfg
```

This needs to be placed into your FsPassengers folder (typically C:\Program Files\Microsoft Games\Flight Simulator 9\FsPassengers) keeping the same folder structure.

Preflight.

Before starting each flight, you need to enter the Air-Child flight number into the 'Flight ID' box on the FsPassengers payload screen. If you fail to do this, you will not be able to upload your report once you have arrived at your destination. You may enter the flight number with or without the prefixing 'ACH'.

Reporting FsPassengers report to Air-Child pipe.

Once you have arrived at your destination, and ended your FsPassengers flight, it's time to export your flight report.

Within flight simulator, open the FsPassengers menu, select Virtual Airlines and find the entry for Air-Child VA (Fig 7.9).

FsPassengers > *Virtual Airlines* > *Air-Child VA* > *Export flight to VA.*

On the following window, simply click the 'Export Now' button. Please do not export more than one flight at a time. If you have more than one flight marked as not exported, the Air-Child server will reject these extra reports. Only the report whose flight number matches that of your Air-Child booked flight will be accepted, then entered into the Air-Child pipe.

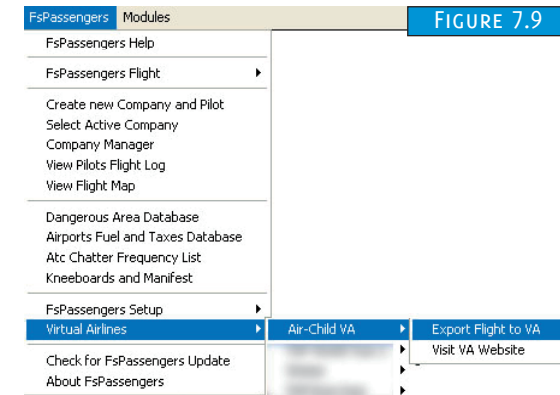


FIGURE 7.9

7.3 XAcars

Of all available PIREP tools XAcars is currently the only one that can be used with X-Plane as well as MS Flight Simulator.

Download XAcars from here: <http://www.xacars.net> and install it.

Go to 'pilot's lounge' / 'my profile', open your 'personal files' (Fig 7.10) and download the configuration file for XAcars. Copy this *xacars.ini* file to the root folder of your XAcars installation. Overwrite the existing .ini file.

Start Flight Simulator and position your plane at the departure airport. Make sure that the parking brake is set and the engines are off.

Start XAcars before starting engines.

In the top left box *Flugnummer* enter your ACH flight number (the flight must have been booked) and press 'Flugdaten via ACARS'. This will retrieve your flight data from the VA booking. If all data is correct, start flight logging by pressing 'ACARS Starten' (Fig 7.11).

After arrival at destination set parking brakes and shut down the engines. Press 'PIREP Senden' to transmit your flight report.

MY PROFILE

FIGURE 7.10

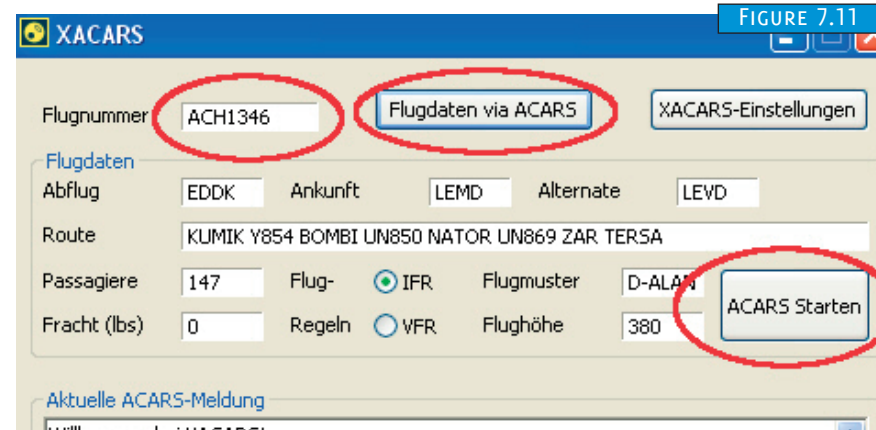
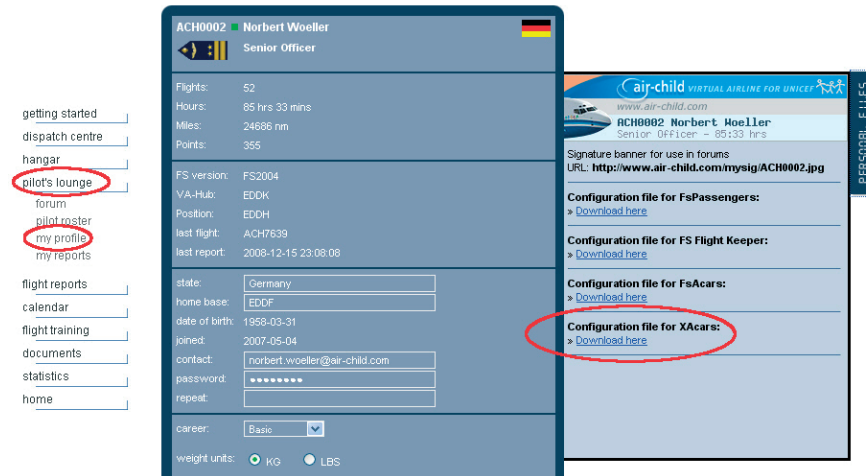


FIGURE 7.11

FLIGHT REPORTS

8.0 Pireps

After you have sent your flight with one of the above described report Addons, you will see the pirep in the pirep section.

Go to *'flight reports / pireps'* and you will get the list of all reported flights by Air-Child pilots (Fig 8.1). You can click on the *'Flight'* number to get more information about the flight, or the *'Pilot-ID'* to get all pireps of the selected pilot or on the *'Reg-Nr.'*, to get all pireps flown with this aircraft. The Status gives you information about the Report Addon used for this flight.

It is possible to delete your own reported flight. Choose the flight you want to delete by clicking on the *'Flight'* number. On the top right side you can delete the flight (Fig 8.2)

(NOTE: This can't be undone!)

Please keep in mind that deleting a report also affects your accumulated points, hours and miles.

8.1 My Reports

...is described in [CHAPTER 2.2](#)

- getting started
- dispatch centre
- hangar
- pilot's lounge
- flight reports**
- pireps
- live watch
- my reports
- calendar
- flight training
- documents
- statistics

Pilot Reports

FIGURE 8.1

pages: 1 | 2 | 3 | 4 | 5 | 6 | 7 | 8 | 9 | 10 | 11 | 12 | 13 | 14 | 15 | 16 | 17 | 18 | 19 | 20

Flight	Filed on	Pilot-ID	Aircraft	Reg-Nr.	from	to	Out	In	Block	Distance	Status
ACH5211	2008-12-29 00:00	ACH0015	Fokker-100	OE-BVI	LIPZ	LOWW	22:00	23:04	01:04	280 nm	▲
ACH3213	2008-12-28 22:40	ACH0015	Fokker-100	OE-BVI	LIRF	LIPZ	20:42	21:39	00:57	262 nm	▲
ACH7690	2008-12-28 19:06	ACH0020	B737-800	OE-GRE	LOWI	LGKR	13:28	15:15	01:47	673 nm	▲
ACH5025	2008-12-28 16:18	ACH0060	B737-700	OE-TPA	EFHK	LOWW	12:49	14:34	01:45	4828 nm	▲
ACH7689	2008-12-28 15:58	ACH0030	B777-200	JA-MSA	OMDB	KLAX	01:15	06:52	16:51	7235 nm	▲
ACH5212	2008-12-28 14:37	ACH0015	Fokker-100	OE-BVI	LIPZ	LIRF	12:34	13:36	01:02	261 nm	▲
ACH3057	2008-12-28 16:40	ACH0052	B737-800	SX-HLO	EDDF	LGAV	12:02	14:54	02:52	1025 nm	▲
ACH7687	2008-12-28 13:29	ACH0023	B737-700	OE-JUP	NSTU	NCRG	10:51	13:51	02:00	729 nm	▲
ACH5039	2008-12-28 00:26	ACH0060	A320-200	OE-LNU	LPPT	LOWW	20:02	23:24	03:22	1299 nm	▲
ACH7688	2008-12-27 22:33	ACH0015	Fokker-100	OE-BHA	EDDM	LKTB	20:32	21:30	00:58	246 nm	▲
ACH7685	2008-12-27 20:44	ACH0020	B737-800	OE-GRE	LOWW	EDDK	14:24	15:40	01:16	454 nm	▲

Pilot Reports

FIGURE 8.2

Flight Report ACH0002 | Norbert Woeller | Mon, 15 Dec 2008 23:08:00 +0100 | Pirep #52/52
by FS Flight Keeper

[click here to delete this report](#)

Flight: ACH7639 | EGLL (London Heathrow) - EDDH (Hamburg)
B737-700 | D-AKWH | Kate Wheeler

Off Blocks: 20:00 h | Gate 128
 Take-Off: 20:12 h | IAS: 139 kts
 Touch-Down: 22:27 h | IAS: 121 kts | 3° pitch | Wind: 81/3 | VS: -490 ft/min
 On Blocks: 22:36 h
 Block Time: 01:36 h
 Flight Time: 01:15 h / (01:15 h night flight)

Passengers:

FIGURE 8.3

8.2 Live Watch

After you start tracking your flight with one of the Report Addons, your flight will be visible in the 'live watch' section. FsPassengers does not provide real time data for live tracking. If you want to make your flight visible on the map, use one of the other Report add-ons in combination with FsPassengers. (e.g. XAcars)

You reach the live watch via 'flight reports/live watch' (Fig. 8.3). You can zoom in or out by clicking on the '+' or '-' icons, or by using your mouse wheel. You can pan around the map using the arrow icons or by dragging the map with your left mouse button pressed. You can also switch between 'Map' or 'Satellite' mode.

An active flight will be displayed with a yellow aircraft icon and two red points, indicating the departure and arrival airports.

On the top right side, all active flights are listed (Fig. 8.4). To jump to a flight, click on it. While the map refreshes (once a minute) it will center itself on the selected aircraft's position. You can click on the yellow aircraft icon, to get more information about that flight. (Please note: If the yellow aircraft icon is close to a red departure or arrival point, you have to zoom in, to pick up the yellow aircraft icon).

The live watch page will be updated automatically. However you have the choice to update the page manually by using the little icon on the top.

- getting started
- dispatch centre
- hangar
- pilot's lounge
- flight reports**
- pireps
- live watch**
- my reports
- calendar
- flight training
- documents
- statistics
- home

Live watch

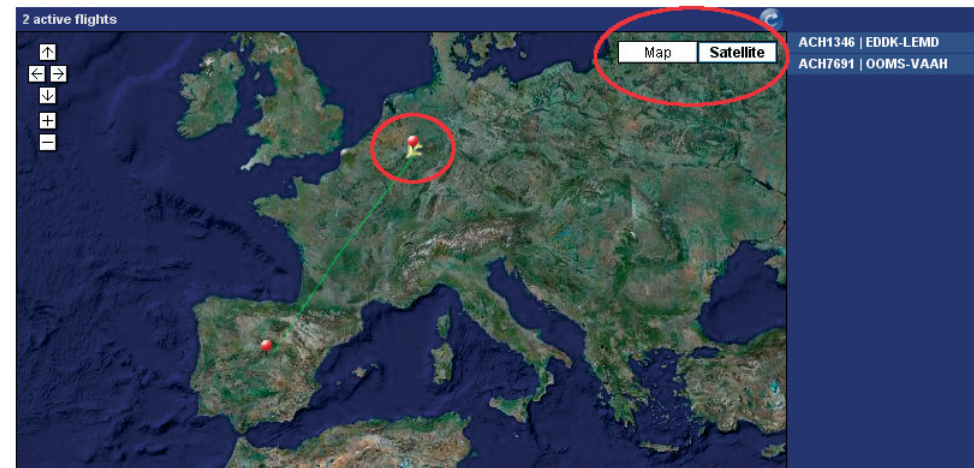
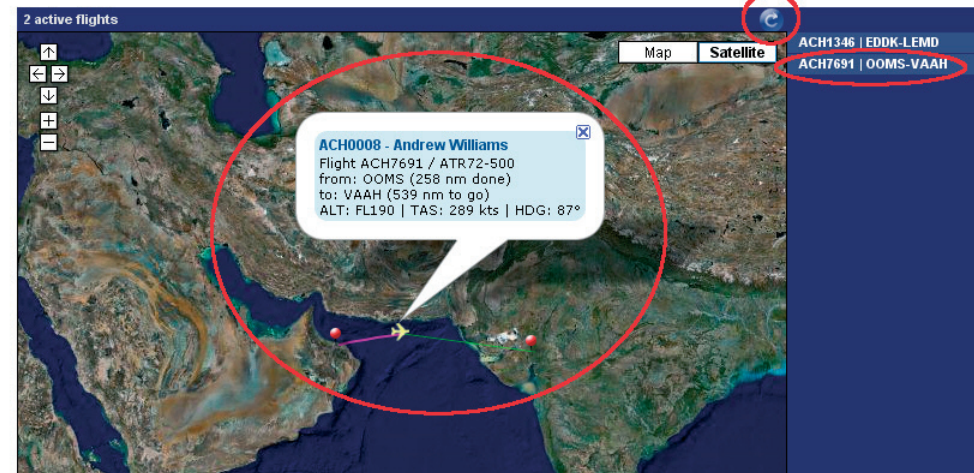


FIGURE 8.4

- getting started
- dispatch centre
- hangar
- pilot's lounge
- flight reports
- pireps
- live watch
- my reports
- calendar
- flight training
- documents
- statistics
- home

Live watch



MISCELLANEOUS

9.0 Calendar

The calendar will give you information such as Air-Child online events, UNICEF related data, like the World Children Day etc., FS related dates and so on. It will be possible for every Air-Child pilot to make an entry in the calendar.

Please note: The calendar is still under construction

- [getting started](#)
- [dispatch centre](#)
- [hangar](#)
- [pilot's lounge](#)
- [flight reports](#)
- [calendar](#)
- [flight training](#)
- [documents](#)
- [statistics](#)
- [home](#)

9.2 Documents

Here you will find some useful documents, like this Pilot Manual, Flightlevel Conversion Sheet and so on. We will add more documents in the future

- [getting started](#)
- [dispatch centre](#)
- [hangar](#)
- [pilot's lounge](#)
- [flight reports](#)
- [calendar](#)
- [flight training](#)
- [documents](#)
- [statistics](#)
- [home](#)

9.1 Flight Training

Here you will find various documents about Flight Training and the Examinations you have to pass if you are in the Professional Career.

Please note: The Flight Training section is still under construction

- [getting started](#)
- [dispatch centre](#)
- [hangar](#)
- [pilot's lounge](#)
- [flight reports](#)
- [calendar](#)
- [flight training](#)
- [documents](#)
- [statistics](#)
- [home](#)

9.3 Statistics

Gives you some self explanatory statistics

- [getting started](#)
- [dispatch centre](#)
- [hangar](#)
- [pilot's lounge](#)
- [flight reports](#)
- [calendar](#)
- [flight training](#)
- [documents](#)
- [statistics](#)
- [airline](#)
- [pilots](#)
- [aircraft](#)